

***Sella turcica* morphometry using computed tomography**

C.R. Ruiz, N. Wafae and G.C. Wafae

Disciplina de Anatomia, Centro Universitário São Camilo, SP - Brasil

Departamento de Anatomia Descritiva e Topográfica, Universidade Federal de São Paulo, UNIFESP – EPM, Brasil

In the published paper of Ruiz et al. (2008), the figures 4 and 6 are the same. The publishers apologize for this error, and reproduce the correct figure 4 here, along with the corresponding legend.

REFERENCE

RUIZ CR, WAFAE N and WAFAE GC (2008). *Sella turcica* morphometry using computed tomography. *Eur J Anat*, 12: 47-50.

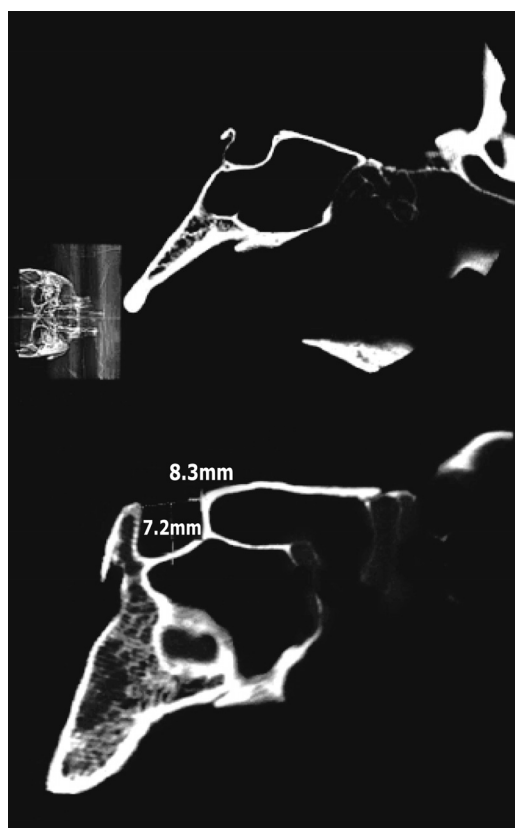


Figure 4. Examples of the *sella turcica* with a U shape.