

Effect of a single dose of ethanol on developing peripheral nerve of chick embryos

J.D. Chaudhuri

Department of Anatomy, All India Institute of Medical Sciences, Ansari Nagar, New Delhi-110029, India

SUMMARY

Fetal Alcohol syndrome (FAS) is a condition occurring in some children of mothers who have consumed alcohol during pregnancy. It is characterized by physical and mental growth retardation, craniofacial anomalies and derangements of numerous body systems. A particular distressing feature of FAS is affection of the nervous system, which manifest as motor and sensory derangements and neurobehavioral deficits. However, no specific changes in the brain and spinal cord that could conclusively explain these neuronal defects have been reported. The aim of this study was to investigate the effects of a single high dose of ethanol exposure during early gestation on the peripheral nerve, with a view to understanding the neuronal disorders appearing in FAS. A chick model of FAS was used and embryos were exposed to 5%, 10% and 15% ethanol immediately after hatching. The effects on general growth and development and on the peripheral nerve of ethanol-exposed embryos were examined following the full period of gestation. There was a significant reduction in crown-rump length, head circumference and body weight in ethanol-exposed chicks as compared with appropriate control groups. The degree of growth retarda-

tion among the different alcohol exposed groups was dose dependent and significant prenatal embryo mortality was seen in those exposed to 15% ethanol. In embryos that survived the exposure to 15% ethanol, features of myelin degeneration were observed in the peripheral nerve in the majority of cases. No features of myelin degeneration were observed in embryos exposed to 5% and 10% ethanol or in the control groups. This study demonstrates the direct toxic effects of a single high dose of ethanol on developing embryos in general and the peripheral nerves in particular. Accordingly the pathological changes observed in peripheral nerves could account for some of the neurobehavioral deficits observed in FAS.

Key words: Fetal alcohol syndrome - FAS - Myelin degeneration - Peripheral nerve

INTRODUCTION

Fetal alcohol spectrum disorders (FASD), and their clinical presentation- Fetal Alcohol Syndrome (FAS), is a condition occurring in some children due to maternal alcohol consumption during pregnancy. Some surveys have revealed that about 16% of children are

prenatally exposed to alcohol, making it the commonest neurobehavioral teratogen (Smith, 1980). While earlier studies had associated FASD with high alcohol consumption during pregnancy, recent studies have shown that even the smallest amounts of alcohol can adversely affect the developing fetus (Chaudhuri, 2004; Jacobson and Jacobson, 1994).

Current diagnostic criteria for FAS include three specific facial findings namely, a smooth philtrum, a thin vermilion border of the upper lip and short palpebral fissures, and the presence of one or more facial features along with a deficit in body weight or central nervous system abnormalities (see Wattendorf and Muenke, 2005 for details). A significant clinical feature in FAS is motor and sensory derangements, which include impaired fine motor skills, neurosensory hearing loss, poor tandem gait and deficient eye-hand coordination (Chudley et al., 2005; Livy and Elberger, 2001; Sood et al., 2001). However, no changes have been observed in the brain and spinal cord in children with FAS or in experimental models of FAS (Sluyter et al., 2005; Farber and Olney, 2003; Norton and Kotkoskie, 1991; Ledig et al., 1988; Miller, 1987; Rudeen and Guerri, 1985; Lancaster et al., 1984; Stolenburg-Didinger and Spohr, 1983; Lancaster et al., 1982; Barnes and Walker, 1981) that might possibly explain the neuronal deficits in FAS. Thus, it has been hypothesized that alterations in the peripheral nervous system could be responsible for some of the observed neuronal disorders.

In this context, the tibial and saphenous nerves were examined in a mouse model of FAS following a single instance of ethanol exposure during midgestation (Parson and Sojitra, 1995). No significant changes were observed in these nerves although, interestingly the optic nerve showed a significant disruption of myelination, leading the authors to suggest that prenatal ethanol exposure is not detrimental to peripheral nerves. In contrast, a recent study by Avaria et al. (2004) of newborn children exposed continuously to alcohol during their gestational period revealed a significant impairment in nerve conduction velocity and amplitude changes in peripheral nerves. This effect persisted beyond one year of life, suggesting that prenatal alcohol exposure can cause persistent impairment of peripheral nerve functions. In that study the authors hypothesized that it could be due to axonal disruption or myelin degeneration,

although the design of the study did not allow these factors to be investigated. However, impairment of nerve conduction velocity is strongly suggestive of impaired myelination and consequent sensory and motor deficits (Colello and Pott, 1997). This is significant because it directly links gestational alcohol exposure with peripheral neuropathy and provides a possible explanation for some of the neurological deficits observed in FAS.

Hence, the aim of this study was to examine the specific effect of a single high dose of ethanol during early pregnancy on developing myelin in the peripheral nerve in a chick model of FAS. The choice of a single dose of ethanol during early gestation was based on surveys of the drinking pattern of pregnant women, many of whom consume alcohol during early pregnancy without realizing that they are pregnant (Floyd et al., 1999). Further, as some studies have also shown that a single dose of ethanol maybe be detrimental to developing skeletal muscle (Chaudhuri, 2004), it is possible that a similar effect could also be induced in the peripheral nervous system. This considers that the process of myelination is more vulnerable during the initial phase of gestation, when reciprocal interactions between differentiating glial cells and neurons define the course of myelination even before these cell types are definitely recognizable (Barone et al., 2000).

The chick is a convenient model for studies on FAS since it permits for the determination of the direct effects of ethanol when administered before day 10, without the influences of maternal undernutrition, concurrent nicotine or drug use, acetaldehyde formation, or impaired placental function (Bupp-Becker and Shibley, 1998; Wilson et al., 1984). Further, studies on the effects of early ethanol exposure on chick embryos are feasible owing to a relatively low mortality rate, and because ethanol-exposed chicks demonstrate growth suppression early on in development (Pennington 1990), and show learning deficits after hatching even without evident growth suppression (Means et al., 1989).

MATERIAL AND METHODS

Freshly fertilized White LegHorn chick eggs, type Single Comb (SC), were obtained from the local hatchery and divided into three groups I, II and III. The weight of the eggs ranged from 0.052 to 0.057 kg with a mean

weight of 0.055 kg. There was no variability in the weight of the eggs, and 30 and 60 eggs were randomly assigned to groups I and II, while group III consisted of 120 eggs. The eggs in group I were further randomly divided into three subgroups of 10 eggs each, designated as A1, B1 and C1. The eggs in group II were also randomly divided into three subgroups of 20 eggs each and designated as A2, B2 and C2, while the eggs in group III were divided into subgroups of 40 eggs each and designated A3, B3 and C3 respectively.

The method of ethanol exposure was similar to that used in a previously published study (Chaudhuri et al., 2004). The fertilized eggs were obtained within 6 h of the being laid, and cleaned with 70% ethanol. A small hole was made at the blunt end of each egg, under a laminar flow hood, and 250 μ l of a 5%, 10% and 15% solution of ethanol in chick Ringer's solution [sodium chloride (123mM), potassium chloride (5mM), and calcium chloride (1.6mM), pH 7.2] was injected directly into the air sac of the eggs in subgroups A1, A2 and A3 respectively. All injections were carried out in the horizontal position, so that ethanol exposure in the chick embryos would be diffusion-mediated. The ethanol used for injection was same as that used in a previous study in this laboratory (Chaudhuri, 2004), and conformed to the requirements of Absolute (Anhydrous) Alcohol, Indian Standard 321 of 1964, and was obtained from a commercial supplier (Ishika International, Mumbai, India). The eggs in subgroups B1, B2 and B3 were injected with 250 μ l of chick Ringer's solution. The openings made in the egg shells were then sealed with wax. The eggs in subgroups C1, C2 and C3 were left untouched and formed the absolute control group.

The eggs were incubated in an (egg) incubator (Model EI 1999, Capital Engineering Corporation, New Delhi, India) in the horizontal position at 37°C and a relative humidity of 70% for 3 weeks, and were manually rotated twice a day. The guidelines set up by the All India Institute of Medical Sciences Animal Care and Use Committee was followed concerning the treatment and disposal of embryos.

Examination of Chicks

Chicks from all groups (i.e. I, II and III) were recovered after the full gestational period of 21 days. The egg shells were cracked manually, and the chicks were allowed to emerge

from their shells. The chicks were examined for gross deformities, and body weight, crown-rump length and head circumference was measured according to the procedure described by Pennington and Kalmus (1987).

The chicks were killed by a prolonged overdose of carbon dioxide, and the quadriceps muscle was carefully dissected out from both limbs and about 2 mm thick horizontal slices were prepared for staining by the Swank-Davenport modification of Marchi's method (Swank and Davenport, 1953). The slices were rinsed in 1% potassium chlorate for 7-8 minutes, and transferred to the impregnating solution (20 ml 1% osmium tetroxide, 60 ml 1% potassium chlorate, 12 ml formaldehyde and 1 ml of glacial acetic acid). The slices were maintained in the impregnating solution at room temperature in the dark for 10 days, and then washed in running tap water for one day. Frozen sections 30 μ m thick were cut on a cryotome and dehydrated, cleared, and mounted in Canada Balsam. A total of 30 serial sections were cut from each quadriceps muscle and every fifth section was examined. Thus, a total of six sections of the peripheral nerve innervating the quadriceps muscle were examined. In sections where no unusual features were observed, all the 30 sections were examined. Sections were photographed using an Olympus microscope (Model AX 70).

Statistical analysis

One way analysis of variance (ANOVA) was used to test for differences in crown-rump length, head circumference, and body weight among ethanol-treated, chick Ringer's solution-treated and untreated groups. A *P* value of <0.05 was considered statistically significant.

RESULTS

3.1. Gross anomalies and body parameters

After hatching, all the chicks were examined for gross anomalies and mean body weight, crown rump length, and head circumference were recorded. Since no significant differences were observed in body parameters among chicks obtained from each of the subgroups, a single representative mean of the measurements is given in Table 1.

3.1.1. Group I (5 % ethanol exposure)

No premature mortality or gross anomalies were observed in any of the chicks recovered

from all the three subgroups. However, infertility was noted in all subgroups, and 8, 8, and 9 chicks were obtained from subgroups A1, B1 and C1 respectively, because the rest of the eggs were infertile. Chicks exposed to 5% ethanol demonstrated a significant ($P < 0.05$) reduction in body parameters as compared with chicks exposed to chick Ringer's solution and in which no manipulations were carried out.

3.1.2. Group II (10% ethanol exposure)

In this group 18, 17, and 17 chicks were recovered from subgroups A2, B2 and C2 respectively. No gross anomalies or premature mortality were observed in any of the viable chicks in this subgroup. In the subgroup of chicks exposed to Ringer's solution and in those in which no manipulations were carried out, no gross deformities or mortality were observed. In comparison with chicks in which no manipulations were carried out and in chicks exposed to Ringer's solution, there was a significant reduction ($P < 0.05$) in all body parameters in the chicks exposed to 10% ethanol during early gestation.

3.1.3. Group III (15% ethanol exposure)

In this group, 37, 36 and 37 embryos were recovered from subgroups A3, B3 and C3 respectively. A significant mortality was observed in chicks exposed to 15% ethanol. Sixteen (43.2%) were dead at various stages of development and necrotic features were seen. Twenty-one embryos (56.8%) were viable and did not show any gross abnormalities upon visual examination. These were further examined, and their body parameters were recorded. In comparison with the chicks in the other subgroups, a significant ($P < 0.05$) reduction in body parameters was observed in viable ethanol-exposed chicks as compared with controls. There was also a significant reduction in body parameters in these chicks when compared to those exposed to 5% and 10% ethanol.

3.2. Microscopic examination of the peripheral nerves

Sections of the quadriceps muscle were examined for features of myelin degeneration in peripheral nerves. In chick embryos exposed to 5% and 10% ethanol, the myelin of the peripheral nerves appeared colorless or light-brown in color, which is characteristic of

normal myelin as stained by the Swank-Davenport modification of Marchi's method. In chicks exposed to 15% ethanol an intense black coloration of the myelin of the peripheral nerves, characteristic of degenerated myelin, was observed in 13 out of the 21 (61.9%) viable chick embryos examined (Figure 1). There were no features of myelin degeneration in embryos recovered from any of the subgroups exposed to chick Ringer's solution, or in those in which no manipulations had been carried out. The myelin in the peripheral nerves in these chick embryos appeared colorless or light-brown in color. As previously mentioned, when examination of six sections of the quadriceps muscle from any of the experimental or control animals failed to reveal any features of myelin degeneration, all the sections were examined to rule out observation errors.

DISCUSSION

The results of the present study demonstrate the effects of a single high dose of ethanol during early gestation on developing chick embryos. Chick embryos exposed to 5%, 10% and 15% ethanol demonstrated significant growth retardation, as compared to chick embryos in the control group and those exposed to chick Ringer's solution. The reduction in body parameters was directly proportional to increase in ethanol concentrations, with a marked prenatal mortality in embryos exposed to 15% ethanol. Further, the majority of viable chick embryos exposed to 15% ethanol showed myelin degeneration in the peripheral nerves.

Methodological considerations

In this study, the Swank-Davenport modification of Marchi's method was used for the detection of myelin degeneration in the peripheral nerves of chick embryos (Swank and Davenport, 1953). The method is based on the property of all ethylene (double) bonds, such as in the fatty acids of lipids, to reduce osmium tetroxide to lower oxides and black metallic osmium. However, this property of ethylene bonds of reducing osmium tetroxide is lost upon previous or simultaneous oxidation. Normal myelin, in contrast to degenerated myelin, does not contain any hydrophobic neutral lipids. Therefore, when

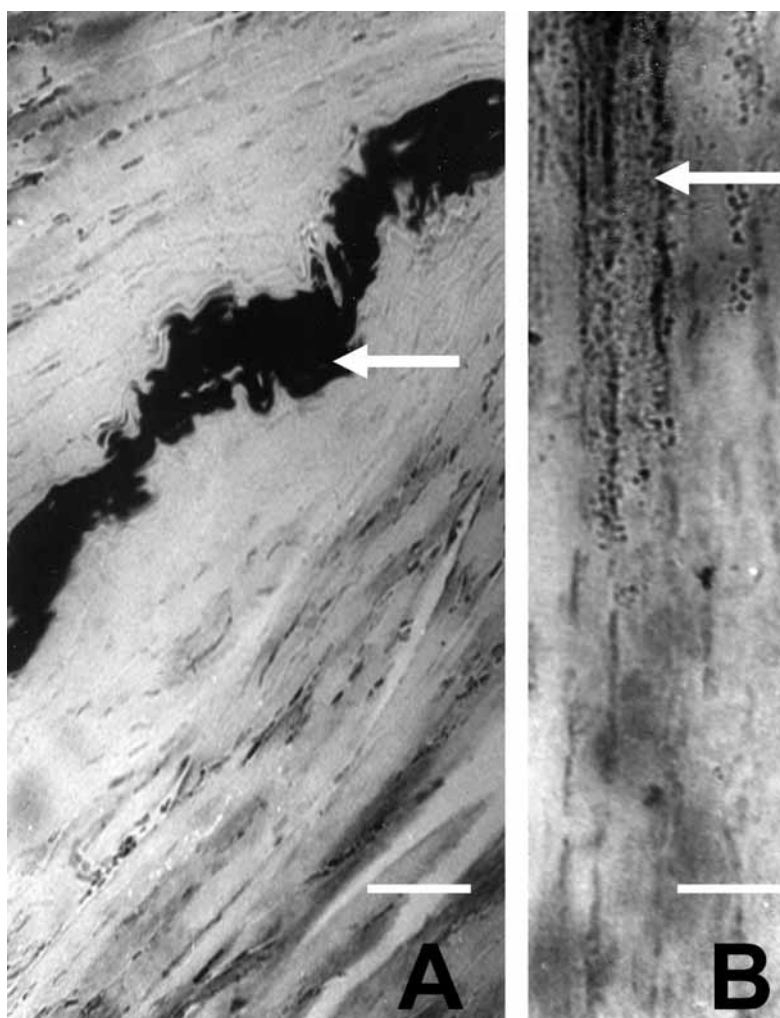


Figure 1. Myelin degeneration of a peripheral nerve (arrows) supplying the quadriceps muscle in chick embryos exposed to 15% ethanol during the gestational period (Panel A). Panel B depicts normal myelin in the peripheral nerves of control chick embryos that were not exposed to alcohol. The Swank-Davenport modification of Marchi's method was used for the detection of degenerated myelin. Scale bar =10 μ m

degenerated (hydrophobic) and normal (hydrophilic) myelin are exposed to aqueous potassium chlorate, only the ethylene bonds in normal myelin are affected. Consequently, the unaffected bonds of degenerated myelin are still free to reduce osmium tetroxide, and hence degenerated myelin appears black, while normal myelin is usually unstained or appears light brown in color when stained by this method.

The reliability of staining for degenerated myelin using this method has been discussed by Fraser (1972) and Strich (1968). More recently, the Swank-Davenport modification of Marchi's method has been used to study myelin degeneration in the spinal cord in rabbits (Corneliusson et al., 1987), cats (Berthold and Carlstedt, 1977) and guinea pigs (Hildebrand and Aldkogius, 1976), and in a rat model of FAS (David and Subramaniam, 2005).

Implications of the results

In this study, ethanol was injected into the air sac of fertilized chick eggs within 6 hours of hatching, thus demonstrating the direct

Table 1. Body parameters (mean \pm standard deviation), infertility, and mortality of chick embryos exposed to ethanol.

GROUPS	I			II			III		
SUBGROUPS	A1 (n=10)	B1(n=10)	C1(n=10)	A2(n=20)	B2(n=20)	C2(n=20)	A3(n=40)	B3(n=40)	C3(n=40)
HEAD CIRCUMFERENCE (CM)	4.1 \pm 0.2*	4.5 \pm 0.1	4.7 \pm 0.2	3.8 \pm 0.1*	4.7 \pm 0.2	4.6 \pm 0.2	3.1 \pm 0.1**	4.8 \pm 0.2	4.6 \pm 0.2
BODY WEIGHT (G)	16.1 \pm 1.6*	21.8 \pm 1.3	21.9 \pm 1.4	15.9 \pm 0.9*	21.8 \pm 1.4	21.9 \pm 0.8	11.8 \pm 0.7**	21.9 \pm 1.5	22.4 \pm 1.1
CROWN RUMP LENGTH	6.1 \pm 0.2*	8.6 \pm 0.2	8.5 \pm 0.1	5.8 \pm 0.2*	8.1 \pm 0.2	8.2 \pm 0.1	3.2 \pm 0.3**	8.1 \pm 0.3	8.1 \pm 0.1
PERCENTAGE OF UNFERTILE EGGS	10	10	5	10	15	10	7.5	20	7.5
PERCENT MORTALITY	0	0	0	15.4	0	0	43.2	0	0

I, II and III represent the 5%, 10%, and 15% ethanol exposure study groups respectively. A1, A2 and A3 represent chicks exposed to 5%, 10%, and 15% ethanol respectively. B1, B2 and B3, C1, C2, and C3 groups represent chicks exposed to Ringer's solution and chicks in which no manipulations (other than rotation of eggs) were carried out.

* Significantly different from values for chicks in which no manipulations were carried out and in those exposed to equivalent chick Ringer's solution ($p < 0.05$)

** Significantly different when values were compared with those of the chicks in all the other groups ($p < 0.05$)

effects of ethanol, since till embryonic day 10 chick embryos lack the capacity to produce acetaldehyde. The daily amounts of ethanol injected into fertilized eggs in this study were similar to those used in an earlier study carried out in this laboratory (Chaudhuri, 2004). Since the present findings of dose-dependent prenatal growth retardation and mortality are similar to those previously reported in other experimental models of FAS (Bhalla et al., 2004; Wang and Kernell, 2001; Becker et al., 1996; Zajac and Abel, 1992; Ernhart, 1991; Clarren et al., 1988; Lee and Leichter, 1980), as well as in humans (Cornelius et al., 2002; Day et al., 2002), they will not be discussed further.

The significant finding in this study is the myelin degeneration in peripheral nerves following a single instance of ethanol exposure during early gestation. This is in contrast to the findings of an earlier study, which concluded that prenatal ethanol exposure does not affect the myelin of peripheral nerves (Parson and Sojitra, 1995). This finding seems fortuitous, considering that prenatal ethanol is detrimental to myelination in central nervous systems. This is primarily because despite variations in the process of myelination in the central and peripheral nervous systems, inherent similarities also exist between the two processes. Previous studies on the effects of ethanol on central nervous myelination have demonstrated lower total brain myelin concentrations (Lancaster et al., 1984), significant delays in myelination (McNeill et al., 1991; Lancaster et al., 1982), and low myelin basic protein (MBP) levels in oligodendrocytes in mice (Ozer et al., 2000) and cell culture models of FAS (Bichenkov and Ellingson, 2001). It has also been demonstrated that ethanol causes a disruption of Schwann cell function and myelination in peripheral nerve culture models of FAS (Mithen et al., 1990). More significantly, a decreased nerve conduction velocity in peripheral nerves has been observed in children exposed to prenatal alcohol (Avaria et al., 2004). The design of this study did not allow us to investigate whether axonal or Schwann cell function was disrupted, since the formation of peripheral myelin is a complex and dynamic process involving the continued interactions between neurons and Schwann cells controlling the various stages of myelination. Thus, the cumulative evidence suggests that prenatal ethanol could be detrimental to peripheral myelin formation. Since the find-

ing of this study of a derangement of peripheral myelination is in contrast to that reported in a previous study (Parson and Sojitra, 1995), certain possibilities exist to account for the observed differences, the main one being the time point of ethanol exposure during gestation. In the study by Parson and Sojitra (1995), pregnant female mice were exposed to ethanol in midgestation, whereas in this study chick eggs were exposed to ethanol immediately after hatching. This is significant since a temporal sequence of events has been reported to exist in the myelination of peripheral nerves (D'antonio et al., 2006; Rees and Inder, 2005) and consequent nerve conduction velocities (Waxman, 1980). For example, a significant difference in levels of myelin proteins between embryonic days 16 and 18 has been described (Leblanc et al., 1989). Thus, based on the findings of this study it may be concluded that critical periods of vulnerability exist in the process of myelination of peripheral nerves. We contend that the myelination degeneration observed in this study would be due to exposure of chick embryos to a more vulnerable period in development, in comparison with the results of the earlier study by Parson and Sojitra (1995).

In conclusion, this study demonstrates that a single high dose of ethanol during early gestation can cause significant growth retardation, increased mortality and myelin degeneration. This offers a possible explanation for the motor and sensory disturbances observed in FAS, more specifically for the impaired nerve conduction in the peripheral nerves of children with FAS.

REFERENCES

- AVARIA ML, MILLS JL, KLEINSTEUBER K, AROS S, CONLEY MR, COX C, KLEBANOFF M and CASSORLA F (2004). Peripheral nerve conduction abnormalities in children exposed to alcohol in utero. *J Pediatr*, 144: 338-343.
- BARNES DE and WALKER DW (1981). Prenatal ethanol exposure permanently reduces the number of pyramidal neurons in rat hippocampus. *Brain Res*, 227: 333-340.
- BARONE S JR, DAS KP, LASSITER TL and WHITE LD (2000). Vulnerable processes of nervous system development: a review of markers and methods. *Neurotoxicology*, 21: 15-36.
- BECKER HC, DIAZ-GRANADOS JL and RANDALL CL (1996). Teratogenic actions of ethanol in the mouse: a minireview. *Pharmacol Biochem Behav*, 55: 501-513.
- BERTHOLD CH and CARLSTEDT T (1977). Observations on the morphology at the transition between the peripheral and the central nervous system in the cat. A light microscopical and histochemical study of S1 dorsal roo-

- tlets in developing kittens. *Acta Physiol Scand, Suppl* 446: 73-85.
- BHALLA S, MAHMOOD S and MAHMOOD A (2004). Effect of prenatal exposure to ethanol on postnatal development of intestinal transport functions in rats. *Eur J Nutr*, 4: 109-115.
- BICHENKOV E and ELLINGSON JS (2001). Ethanol exerts different effects on myelin basic protein and 2',3'-cyclic nucleotide 3'-phosphodiesterase expression in differentiating CG-4 oligodendrocytes. *Brain Res Dev Brain Res*, 12: 9-16.
- BUPP BECKER SR, SHIBLEY IA Jr (1998). Teratogenicity of ethanol in different chicken strains. *Alcohol Alcohol*, 33: 457-464.
- CHAUDHURI JD (2004). Effect of a single dose of ethanol on developing skeletal muscle of chick embryos. *Alcohol*, 34: 279-283.
- CHUDLEY AE, CONRY J, COOK JL, LOOCK C, ROSALES T and LEBLANC N (2005). Public Health Agency of Canada's National Advisory Committee on Fetal Alcohol Spectrum Disorder. Fetal alcohol spectrum disorder: Canadian guidelines for diagnosis. *CMAJ*, 172: S1-S21.
- COLELLO RJ and POTT U (1997). Signals that initiate myelination in the developing mammalian nervous system. *Mol Neurobiol*, 15: 83-100.
- CORNELIUS MD, GOLDSCHMIDT L, DAY NL and LARKBY C (2002). Alcohol, tobacco and marijuana use among pregnant teenagers: 6-year follow-up of offspring growth effects. *Neurotoxicol Teratol*, 24: 703-710.
- CORNELIUSON O, BERTHOLD CH and FREDMAN P (1987). Isolation of myelinoid Marchi-positive bodies from normal rabbit spinal cord. *Brain Res*, 41: 43-53.
- D'ANTONIO M, MICHALOVICH D, PATERSON M, DROGGITI A, WOODHOO A, MIRSKY R and JESSEN KR (2005). Gene profiling and bioinformatic analysis of Schwann cell embryonic development and myelination. *Glia*, 2005 Dec 20;
- DAVID P and SUBRAMANIAM K (2005). Prenatal alcohol exposure and early postnatal changes in the developing nerve-muscle system. *Birth Defects Res A Clin Mol Teratol*, 73: 897-903.
- DAY NL, LEECH SL, RICHARDSON GA, CORNELIUS MD, ROBLES N and LARKBY C (2002). Prenatal alcohol exposure predicts continued deficits in offspring size at 14 years of age. *Alcohol Clin Exp Res*, 26: 1584-1591.
- Ernhart CB (1991). Clinical correlations between ethanol intake and fetal alcohol syndrome. *Recent Dev Alcohol*, 9: 127-150.
- FARBER NB and OLNEY JW (2003). Drugs of abuse that cause developing neurons to commit suicide. *Brain Res Dev Brain Res*, 14: 37-45.
- FRASER FJ (1972). Degenerating myelin: comparative histochemical studies using classical myelin stains and an improved Marchi technique minimizing artifacts. *Stain Technol*, 47: 147-154.
- FLOYD RL, DECOUFLE P and HUNGERFORD DW (1999). Alcohol use prior to pregnancy recognition. *Am J Prev Med*, 17: 101-107.
- HILDEBRAND C and ALDSKOGIUS H (1976). Electron-microscopic identification of Marchi-positive bodies and argyrophilic granules in the spinal cord white matter of the guinea pig. *J Comp Neurol*, 170: 191-203.
- JACOBSON JL and JACOBSON SW (1994). Prenatal alcohol exposure and neurobehavioral development. Where is the threshold? *Alcohol Health Res World*, 18: 30-36.
- LANCASTER FE, MAYUR BK, PATSALOS PN, SAMORAJSKI T and WIGGINS RC (1982). The synthesis of myelin and brain subcellular membrane proteins in the offspring of rats fed ethanol during pregnancy. *Brain Res*, 235: 105-113.
- LANCASTER FE, PHILLIPS SM, PATSALOS PN and WIGGINS RC (1984). Brain myelination in the offspring of ethanol-treated rats: in utero versus lactational exposure by cross fostering offspring of control, pair fed and ethanol-treated dams. *Brain Res*, 309: 209-216.
- LEBLANC AC, FOLDVARI M, SPENCER DF, BRECKENRIDGE WC, FENWICK RG, WILLIAMS DL and MEZEI C (1989). The apolipoprotein A-I gene is actively expressed in the rapidly myelinating avian peripheral nerve. *J Cell Biol*, 109: 1245-1256.
- LEDIG M, CIESIELSKI L, SIMLER S, LORENTZ JG and MANDEL P (1988). Effect of pre- and postnatal alcohol consumption on GABA levels of various brain regions in the rat offspring. *Alcohol*, 23: 63-67.
- LEE M and LEICHTER J (1980). Effect of litter size on the physical growth and maturation of the offspring of rats given alcohol during gestation. *Growth*, 44: 327-335.
- LIVY DJ and ELBERGER AJ (2001). Effect of prenatal alcohol exposure on commissure size in rats. *Teratology*, 63: 15-22.
- MCNEIL DL, SHEW RL and PAPKA RE (1991). Effects of ethanol exposure on myelination and axon numbers in the L2 dorsal root of the neonatal rat. *Dev Neurosci*, 13: 171-175.
- MEANS LW, MCDANIEL K and PENNINGTON SN (1989). Embryonic ethanol exposure impairs detour learning in chicks. *Alcohol*, 6: 327-330.
- MILLER MW (1987). Effect of prenatal exposure to alcohol on the distribution and time of origin of corticospinal neurons in the rat. *J Comp Neurol*, 257: 372-382.
- MITHEN FA, REIKER MM and BIRCHEM R (1990). Effects of ethanol on rat Schwann cell proliferation and myelination in culture. *In Vitro Cell Dev Biol*, 26: 129-139.
- NORTON S and KOTKOSKIE LA (1991). Basic animal research. *Recent Dev Alcohol*, 9: 95-115.
- NUNN DJ, LEBLANC AC and MEZEI C (1987). A 42K protein of chick sciatic nerve is immunologically related to PO protein of peripheral nerve myelin. *Neurochem Res*, 12: 377-384.
- OZER E, SARIOGLU S and GURE A (2000). Effects of prenatal ethanol exposure on neuronal migration, neuronogenesis and brain myelination in the mice brain. *Clin Neuropathol*, 19: 21-25.
- PARSON SH and SOJITRA NM (1995). Loss of myelinated axons is specific to the central nervous system in a mouse model of the fetal alcohol syndrome. *J Anat*, 187: 739-748.
- PASSARO KT, LITTLE RE, SAVITZ DA and NOSS J (1996). The effect of maternal drinking before conception and in early pregnancy on infant birthweight. The ALSPAC Study Team. Avon Longitudinal Study of Pregnancy and Childhood. *Epidemiology*, 7: 377-383.
- PENNINGTON SN (1990). Molecular changes associated with ethanol-induced growth suppression in the chick embryo. *Alcohol Clin Exp Res*, 14: 832-837.
- PENNINGTON S and KALMUS G (1987). Brain growth during ethanol-induced hypoplasia. *Drug Alcohol Depend*, 20: 279-286.
- REES S and INDER T (2005). Fetal and neonatal origins of altered brain development. *Early Hum Dev*, 819: 753-761.

- RUDEEN PK and GUERRI C (1985). The effects of alcohol exposure in utero on acetylcholinesterase, Na/K-ATPase and Ca-ATPase activities in six regions of rat brain. *Alcohol*, 20: 417-425.
- SAMPSON PD, STREISSGUTH AP, BOOKSTEIN FL, LITTLE RE, CLARREN SK, DEHAENE P, HANSON JW and GRAHAM JM Jr (1997). Incidence of fetal alcohol syndrome and prevalence of alcohol-related neurodevelopmental disorder. *Teratology*, 56: 317-326.
- SLUYTER F, JAMOT L, BERTHOLET JY and CRUSIO WE (2005). Prenatal exposure to alcohol does not affect radial maze learning and hippocampal mossy fiber sizes in three inbred strains of mouse. *Behav Brain Funct*, 2: 5-15.
- SMITH DW (1980). Alcohol effects on the fetus. In: RH Schwartz and SJ Yaffe (eds). *Chemical Risk to Fetus and Newborn. Progress in Clinical and Biological Research Drugs*. New York, pp 73-82.
- SOOD B, DELANEY-BLACK V, COVINGTON C, NORDSTROM-KLEE B, AGER J, TEMPLIN T, JANISSE J, MARTIER S and SOKOL RJ (2001). Prenatal alcohol exposure and childhood behavior at age 6 to 7 years: I. dose-response effect. *Pediatrics*, 108: 34-41.
- STOLTENBURG-DIDINGER G and SPOHR HL (1983). Fetal alcohol syndrome and mental retardation: spine distribution of pyramidal cells in prenatal alcohol-exposed rat cerebral cortex; a Golgi study. *Brain Res*, 313: 119-123.
- STRICH SJ (1968). Notes on the Marchi method for staining degenerating myelin in the peripheral and central nervous system. *J Neurol Neurosurg Psychiatry*, 3: 110-114.
- SWANK RL and DAVENPORT HA (1953). Chlorate-osmic formalin method for degenerating myelin. *Stain Technology*, 10: 87-90.
- WANG LC and KERNELL D (2001). Quantification of fiber type regionalization: an analysis of lower hind limb muscles in the rat. *J Anat*, 198: 295-308.
- WATTENDORF DJ and MUENKE M (2005). Fetal alcohol spectrum disorders. *Am Fam Physician*, 72: 279-282.
- WAXMAN SG (1980). Determinants of conduction velocity in myelinated nerve fibers. *Muscle Nerve*, 3: 141-150.
- WILSON RW, KALMUS GW and PENNINGTON SN (1984). Alcohol dehydrogenase activity in the developing chick embryo. *Comp Biochem Physiol B*, 77: 191-196.
- ZAJAC CS and ABEL EL (1992). Animal models of prenatal alcohol exposure. *Int J Epidemiol*, 21: S24-32.